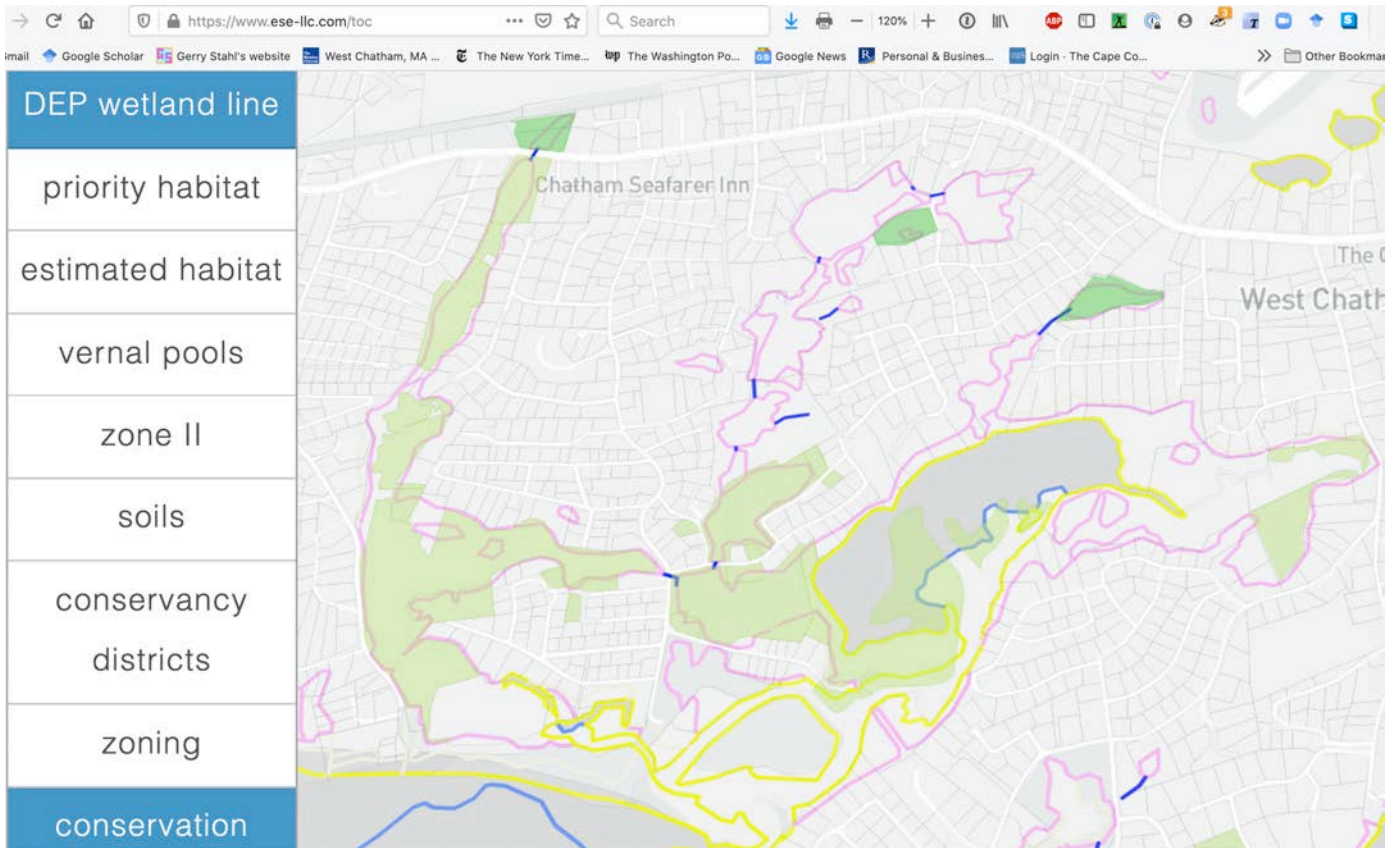


Maps of the Cackle Cove / Bucks Creek salt marsh areas



Green areas are owned by the Chatham Conservation Foundation.



Stewardship: Huckleberry Lane-Cockle Creek

Site Visit Date: 3/25/2021

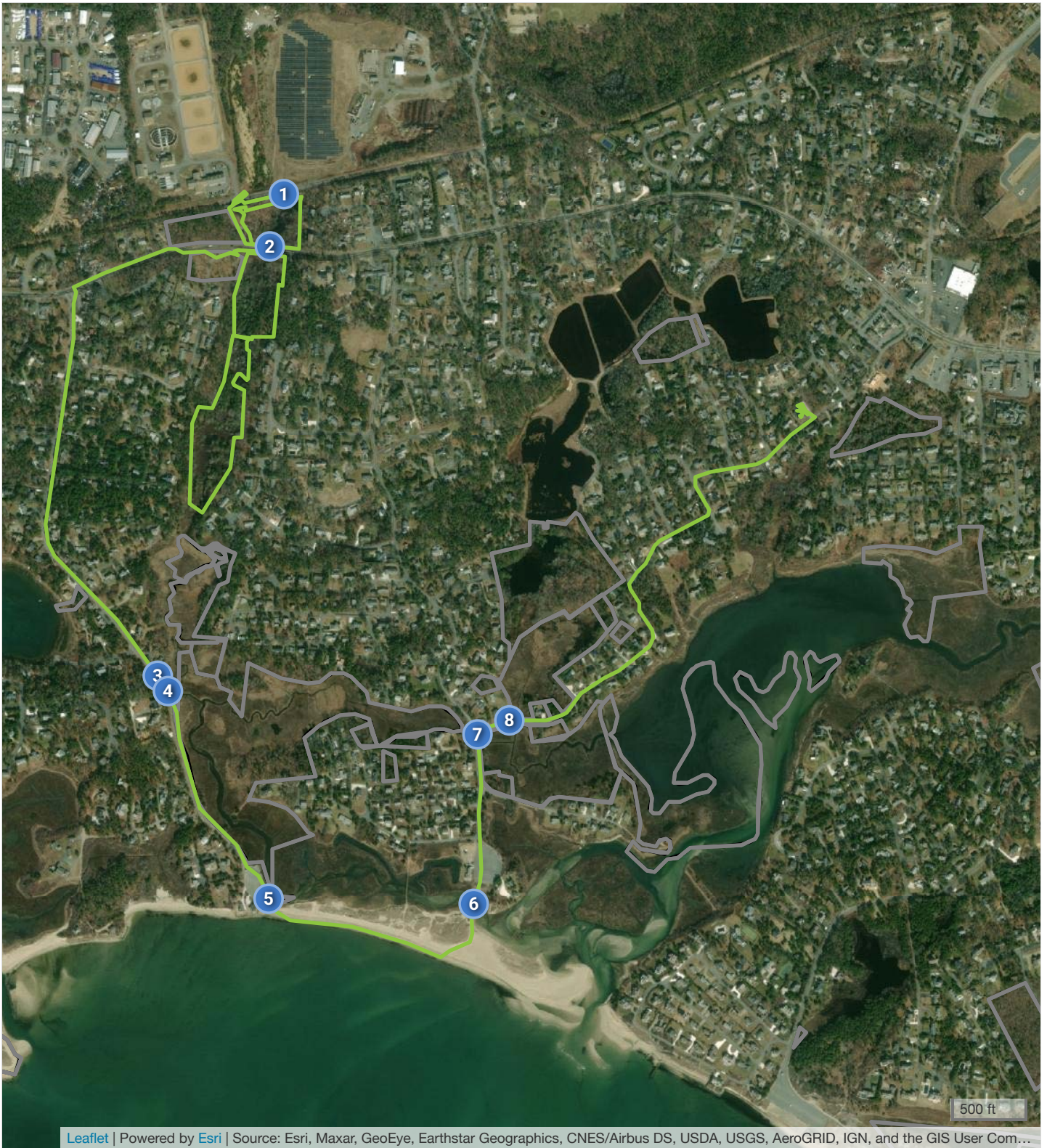




Photo #1 -- Possible culvert opening

Site #1 -- Location: 41° 41' 7.4" N, 70° 0' 39.44" W
-- Direction: 188.88

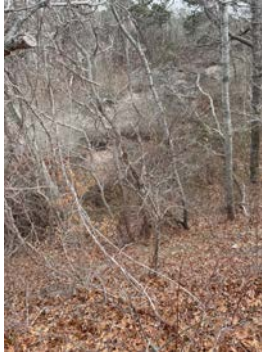


Photo #2 -- Waterway toward 28

Site #1 -- Location: 41° 41' 7.4" N, 70° 0' 39.44" W
-- Direction: 198.23



Photo #3 -- Possible culvert site

Site #2 -- Location: 41° 41' 4.12" N, 70° 0' 40.67" W
-- Direction: 322.23



Photo #4 -- Road run off s of 28

Site #2 -- Location: 41° 41' 4.12" N, 70° 0' 40.67" W
-- Direction: 35.86



Photo #5 -- Water

Site #2 -- Location: 41° 41' 4.12" N, 70° 0' 40.67" W --
Direction: 33.98



Photo #6 -- Waterway n of 28

Site #2 -- Location: 41° 41' 4.12" N, 70° 0' 40.67" W --
Direction: 19.34



Photo #7 -- CC marsh

Site #3 -- Location: 41° 40' 36.59" N, 70° 0' 50.26" W -- Direction: 104.55



Photo #8 -- CC marsh

Site #3 -- Location: 41° 40' 36.59" N, 70° 0' 50.26" W -- Direction: 107.97



Photo #9 -- CC phrag

Site #4 -- Location: 41° 40' 35.6" N, 70° 0' 49.42" W -- Direction: 52.48



Photo #10 -- CC phrag

Site #4 -- Location: 41° 40' 35.6" N, 70° 0' 49.42" W -- Direction: 114.83



Photo #11 -- Bend at bottom of CC

Site #5 -- Location: 41° 40' 22.29" N, 70° 0' 40.74" W -- Direction: 89.42

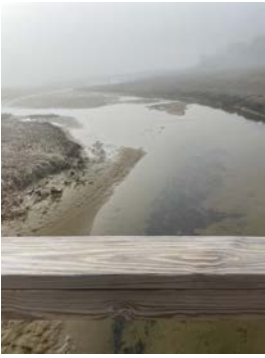


Photo #12 -- Low tide at R

Site #6 -- Location: 41° 40' 21.95" N, 70° 0' 23.18" W -- Direction: 214.4



Photo #13 -- Low tide at R V

Site #6 -- Location: 41° 40' 21.95" N, 70° 0' 23.18" W -- Direction: 150.05



Photo #14 --

Site #7 -- Location: 41° 40' 32.8" N, 70° 0' 22.79" W -- Direction: 29.87



Photo #15 -- Culvert Rv to CC low tide E side

Site #7 -- Location: 41° 40' 32.8" N, 70° 0' 22.79" W -- Direction: 29.87



Photo #16 --

Site #8 -- Location: 41° 40' 33.75" N, 70° 0' 20.09" W -- Direction: 44.62



Photo #17 -- Culvert at RV N side

Site #8 -- Location: 41° 40' 33.75" N, 70° 0' 20.09" W -- Direction: 311.88



Photo #18 -- Culvert at RV S side

Site #8 -- Location: 41° 40' 33.75" N, 70° 0' 20.09" W -- Direction: 127.13