

***“WebGuide: Encouraging &
Supporting Collaborative
Knowledge-Building”***

Gerry Stahl

Center for LifeLong Learning & Design

Institute of Cognitive Science &

Department of Computer Science

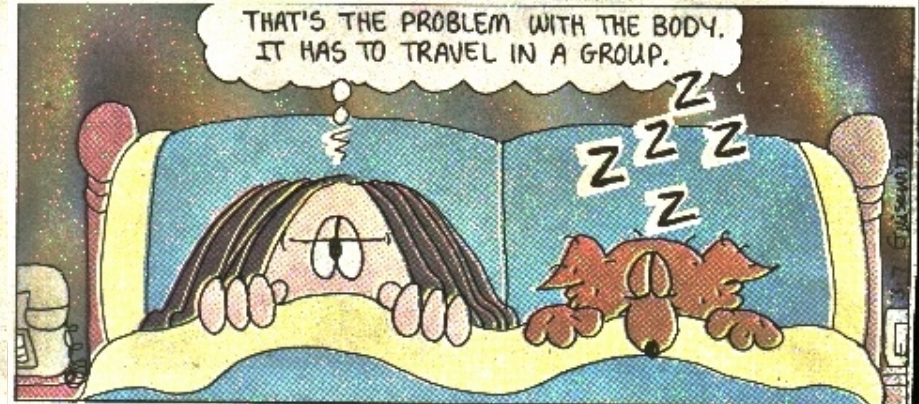
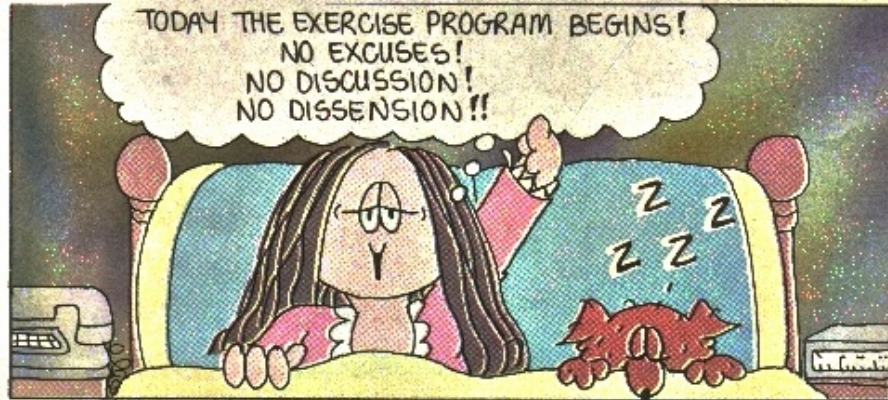
University of Colorado, Boulder, CO, USA

Gerry.Stahl@Colorado.edu

<http://www.cs.colorado.edu/~gerry>

knowledge-building as multiple perspectives interacting

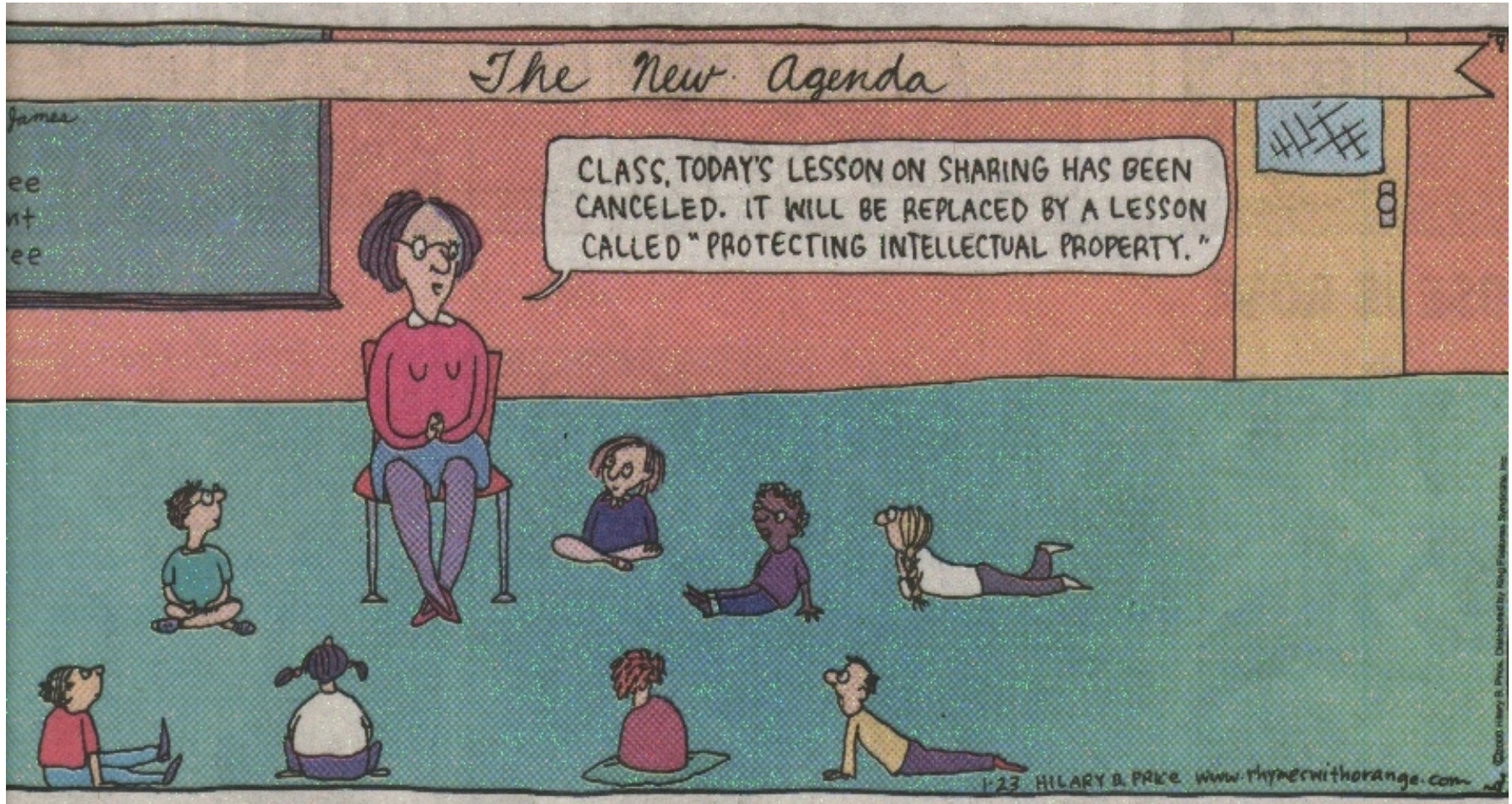
CATHY



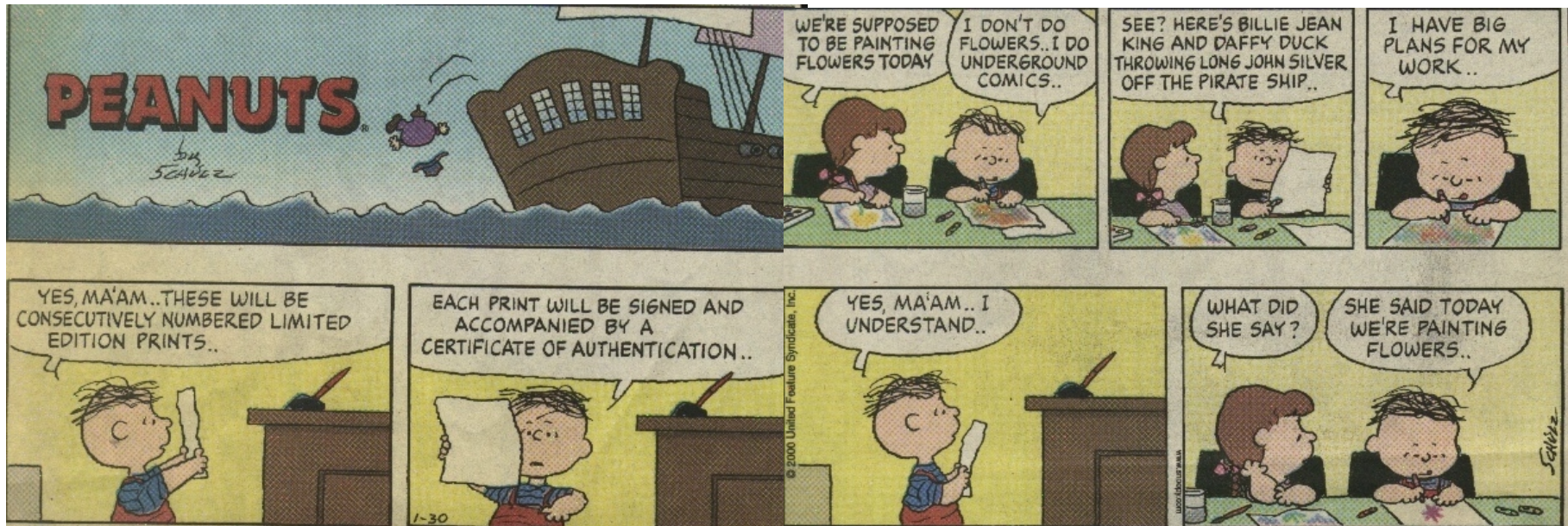
By Cathy Guisewite

© 1999 CATHY GUISEWITE distributed by Universal Press Syndicate

Communities support & restrict collaboration

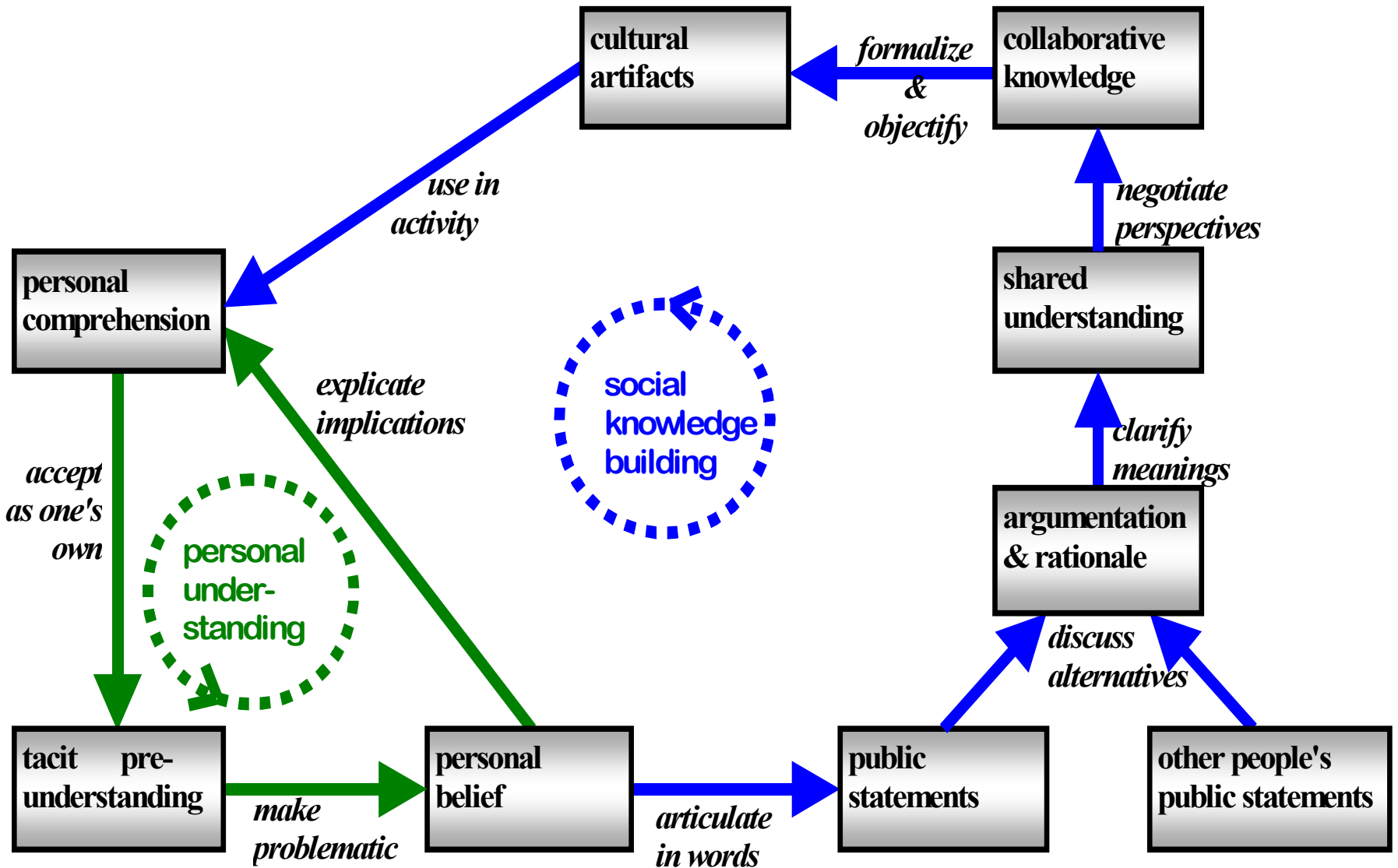


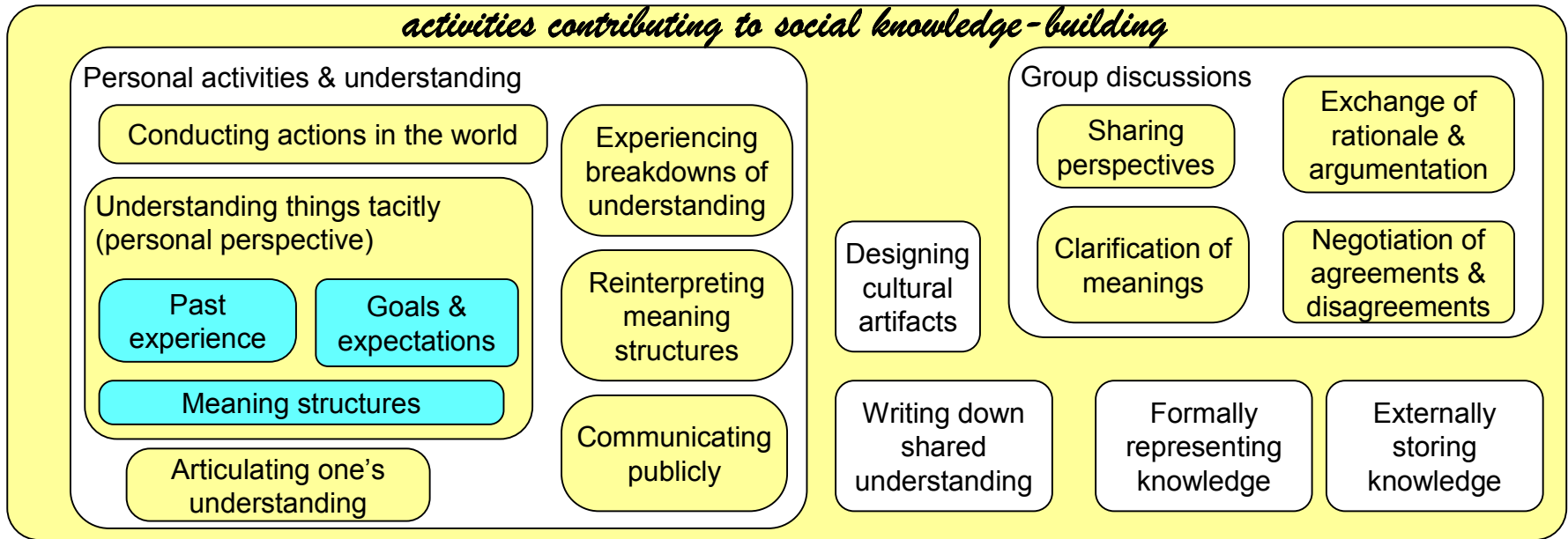
Technology: confined by social practices, subject to negotiation



*Models of knowledge-building as
process, as activity in context, as
mediation:*

*a framework for computer support of
discussion, perspectives, negotiation,
group knowledge management*





The mediation of social knowledgebuilding

Personal perspective

Tacit understanding of the social lived world

Experiencing breakdowns of understanding

Reinterpreting meaning structures

Articulating one's understanding

Formally structuring knowledge

Mediating tools and systems

Discussion: verbal statements & visual cues

Representations in communication media

Artifacts: physical, symbolic, cultural

Personal external memory devices

Organizational memory systems

Synergistic group understanding

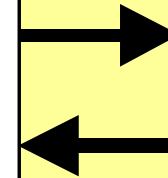
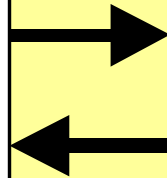
Sharing perspectives

Exchanging arguments & rationale

Clarifying meanings

Negotiating conflicts

Formally structuring knowledge



Technology components of knowledge-building environments

	<i>Knowledge-building activities</i>	<i>Forms of computer support</i>	<i>Prototype systems</i>
A	articulate in words	discussion forum	DynaClass
B	discuss alternatives	personal & group perspectives	WebGuide
C	argumentation & rationale	argumentation graph	InfoMap
D	clarify meanings	interactive glossary	DynaGloss
E	negotiate perspectives	negotiation support	WebGuide
F	formalize & objectify	interactive bibliography	DynaSource

WebGuide: supporting discussion, reflection, negotiation, knowledge management, in perspectives

The screenshot displays the WebGuide web application interface. The main window is titled "WebGuide" and contains a navigation menu with "Login", "Discussions", "Perspectives", and "Map of Discussion". Below the menu, there are tabs for "group", "discussion", "negotiate", "personal", "comparison", "archive", and "perspective: Gerry's personal". The "perspective" dropdown is set to "Gerry's personal" and a "refresh" button is visible.

The main content area shows a hierarchical tree structure of discussions under "Gerry's personal". The selected item is "comment: Group project on WebGuide negotiation (by: Gerry in: group on: 03/23/2000)".

On the right side, there is a sidebar for the selected comment, showing the author "Gerry Stahl" and a "show title" / "show content" toggle. Below this are several buttons: "discuss", "new note", "edit note", "delete note", "move note", "copy note", "link note", "copy to home", "link to home", "email from note", "select second note", "private note", "proposal", and "vote".

Below the main window, a Microsoft Internet Explorer browser window is open, displaying the selected comment. The address bar shows "http://webguide.cs.colorado.edu/2000.html". The page content includes the title "Group project on WebGuide negotiation" and the text: "A group of students in Tammy Sumner's User Interface Design course is working on designs of negotiation support in WebGuide. They should be coming up with some interesting ideas in the next week. They can respond to this comment by clicking on the Discuss button and filling out the title and content of their comments." At the bottom of the browser window, it says "WebGuide Project - Page generated: 10-Apr-100, 12:02:57" and "Interactive Website - Problems: [WebGuide WebMaster](#)".

The Windows taskbar at the bottom shows the Start button, several application icons, and the system tray with the time "12:06 PM".

group

discussion

negotiate

personal

comparison

Gerry's personal

heading: DISCUSSIONS (in: group on: 03/21/2000)

comment: Switching from Title View to Content View doesn't work properly

*comment: Do not forget to "refresh" the display. (by: Gerry in: group on: 03/21/2000)

comment: That's a nice feature. But how does it work? (by: Marcel in: group on: 03/21/2000)

*comment: It is a "new" feature (by: Gerry in: group on: 03/29/2000)

heading: PROPOSALS (in: group on: 03/21/2000)

heading: Negotiation (by: Group in: group on: 03/21/2000)

comment: Student project in Dortmund (by: Gerry in: group on: 03/23/2000)

comment: Group project on WebGuide negotiation (by: Gerry in: group on: 03/23/2000)

heading: Other new features (by: Group in: group on: 03/21/2000)

heading: New components (by: Group in: group on: 03/21/2000)

resource: Persona component (by: Group in: group on: 03/21/2000)

resource: Glossary component (by: Group in: group on: 03/21/2000)

resource: Bibliography component (by: Group in: group on: 03/21/2000)

resource: Perspectives component (by: Group in: group on: 03/21/2000)

heading: New functionality (by: Group in: group on: 03/21/2000)

comment: Email (by: Group in: group on: 03/21/2000)

comment: Printing (by: Group in: group on: 03/21/2000)

comment: User Manual (by: Group in: group on: 03/21/2000)

show title show content

discuss

new note

edit note

delete note

move note

copy note

link note

copy to home

link to home

email from note

select second note

private note

proposal

vote

Web of Perspectives: a flexible hierarchy of computational sharing among groups & individuals

